

# UNIC

Truck-Mounted UNIC Crane

# URV1004-CNCT

***For Heavy-Duty truck***

*Maximum Lifting Capacity*

**10100** kg



**FURUKAWA UNIC CORPORATION**

# URV1004-CNCT

*Heavy duty and Top safety,  
Reliable on the job*



## URV1004

Maximum  
Lifting Capacity

**10100kg**

Maximum  
Hook Height

**15.6m**

Maximum  
Working Radius

**13.69m**

### Wide Horizontal Extension

Main Outrigger Max.  
(Hydraulic Extended)

**5.7m**

Rear Outrigger Max.  
(Hydraulic Extended)

**3.2m**

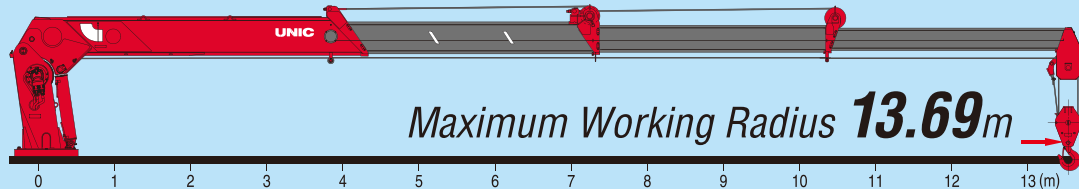
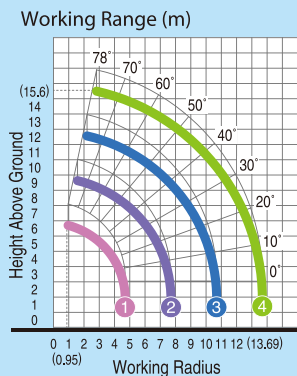


NOTE : Top Seat-Control Version



# URV1004

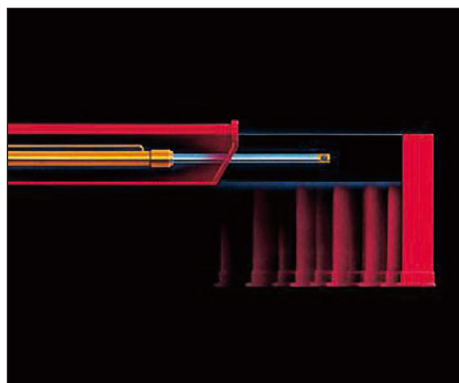
## 4 Section Boom



Rated Loads (kg)

Working Radius (m)	0.95~2.5	2.7	3.0	3.5	4.0	4.5	5.0	5.5	6.0	7.0	8.0	9.0	10.0	11.0	12.0	13.69
1	10100	9100	8400	7250	6350	5300 (4.69m)										
2	6600	6600	6600	6000	5300	4700	4300	3850	3600	3100	2700 (7.69m)					
3			5300	5300	4600	4100	3700	3400	3100	2700	2300	2000	1800	1600 (10.69m)		
4			4100	4100	4100	4100	3700	3400	3100	2700	2300	2000	1800	1600	1300	1000

## Standard Equipment



Hydraulic Horizontal Outrigger



Rear Outrigger



Base-Control

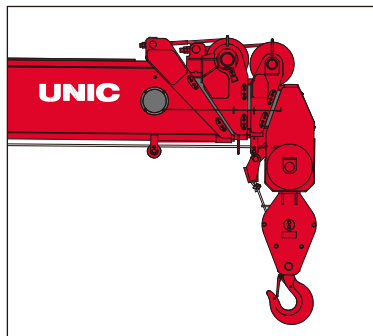


Oil Cooler

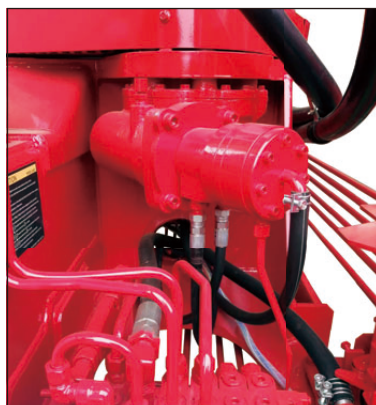
## Safety Devices



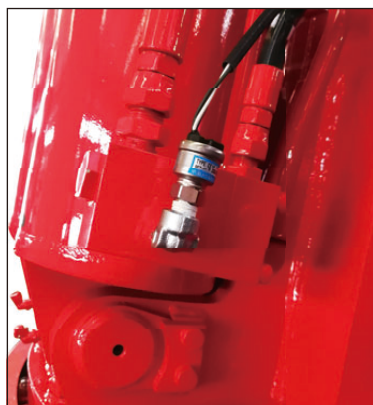
Alarm for Overwinding / Automatic Stop for Overwinding



Automatic Hook Stow System



Interlock System for Slewing



Derrick Cylinder Pressure Alert System

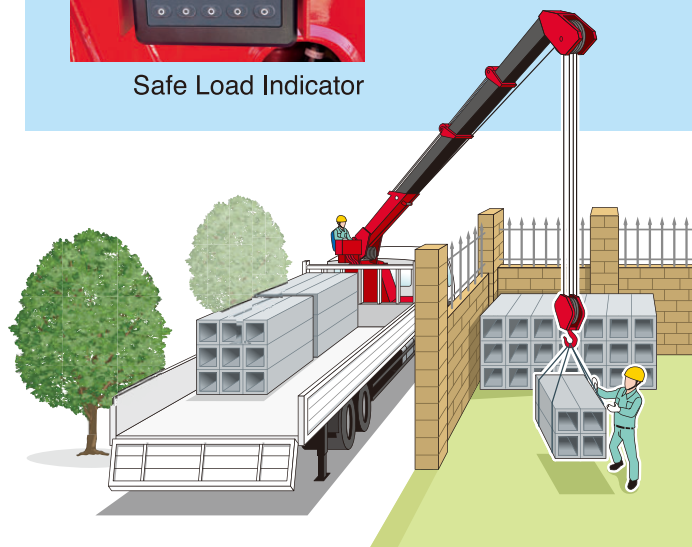
## Option



Top Seat-Control



Safe Load Indicator

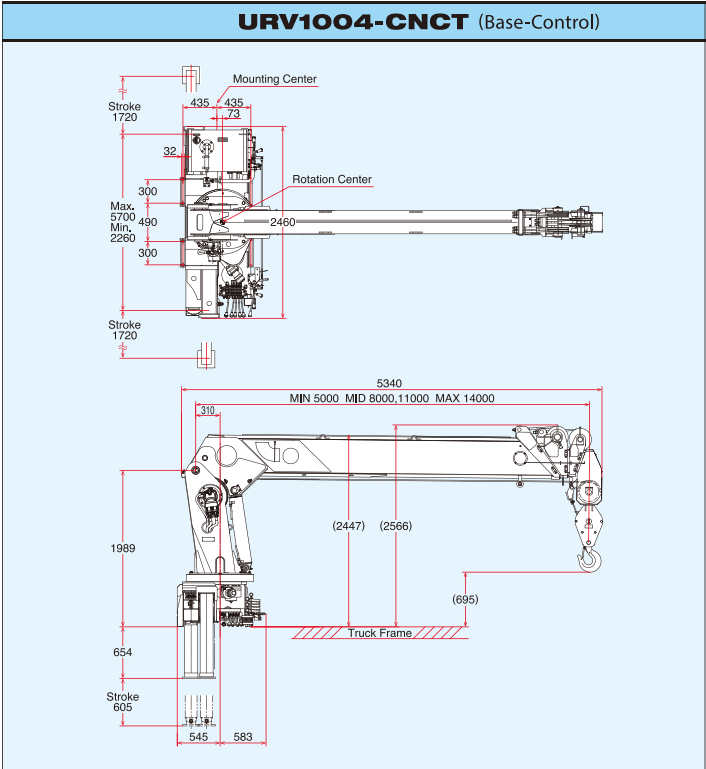
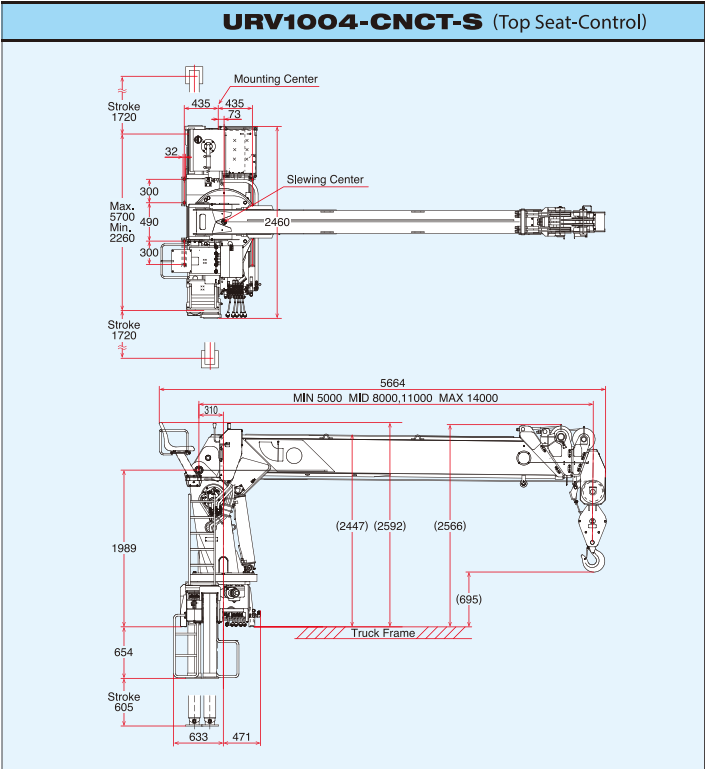


# Specifications Table

Crane Model	URV1004
Maximum Lifting Capacity	10,100kg × 2.5m
Maximum Hook Height	15.6m
Working Radius	Min. 0.95m ~ Max. 13.69m
Boom Length	Min. 5.0m ~ Max. 14.0m
Boom Sections	4
Boom Raising Angle	Min. -0.6° ~ Max. 78°
Slewing Angle (Continuous)	360°

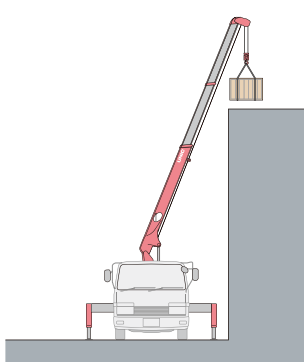
## Crane Mounting Dimensions

(Unit: mm)

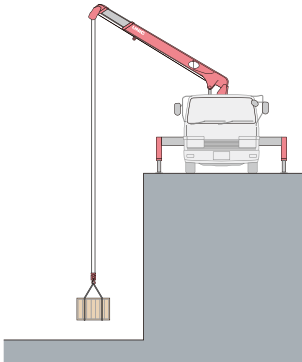


## Operational advantages...

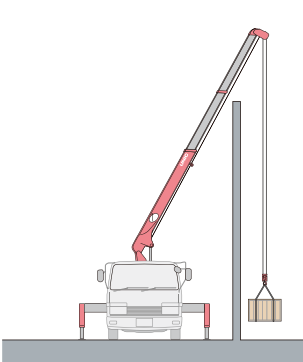
High or low tight, UNIC straight-boom wire-rope cranes match the task. They're great high-lift performers, Lifting loads over walls is also no problem with their unrestricted raising and lowering. In deep-hole jobs they're strong, and accurate. Many extra safety features, too.



Buildings, walls, whatever, with UNIC wire-rope cranes you get precise high-lift placement and safe, sure operation. Their dependability is all in their strength and design, original UNIC features.



Higher performance, too, at lower depths. UNIC wire-rope cranes handle heavy loads in deep-hole jobs with accuracy and stability. A wide range of models assures versatile matching to job requirements.



Tight places are the right places for UNIC wire-rope cranes. In any operating situation their strong steel cables mean extra dependability and safety. High, low, or tight, UNIC wire-rope cranes are always right.



NOTE



HOOK  
+  
SLINGS  
+  
LOAD  
=  
RATED LOAD

1. Rated loads shown in the chart are based on the crane strength with the outriggers fully extended on a firm level ground and on the actual working radius including the deflection of boom.
2. The weights of hook (100 kg.), slings, and any accessories attached to the boom or loadline must be deducted from the above capacities in the chart.
3. Capacities shown must reduce in accordance with vehicle weight and loaded condition of truck, crane mounting position, and operating speed.
4. The figures in relation to the speed are on the basis of no-load running at rated oil flow conditions.
5. In accordance with our policy of constant product improvement, all specifications are subject to change without notice or obligations.

**FURUKAWA UNIC CORPORATION**

<http://www.uniccrane-global.com/>

Authorized **UNIC** distributor