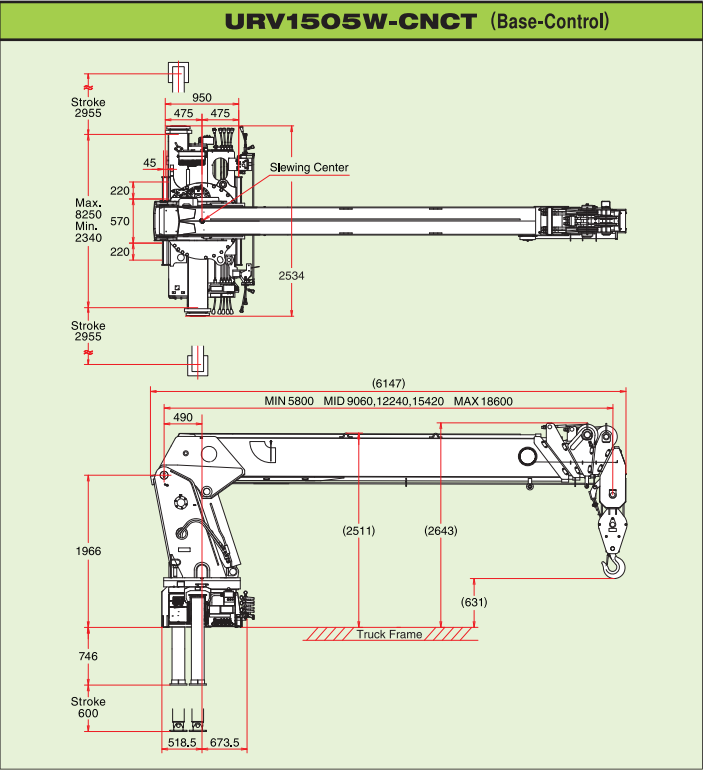
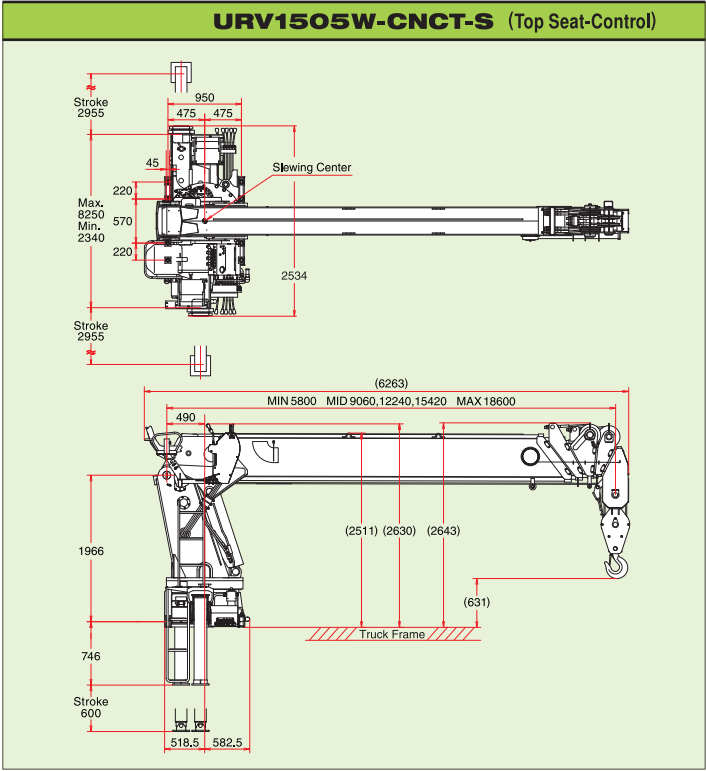


Specifications Table

Crane Model	URV1505W
Maximum Lifting Capacity	15,100kg × 2.0m
Maximum Hook Height	19.7m
Working Radius	Min. 1.05m ~ Max. 18.11m
Boom Length	Min. 5.80m ~ Max. 18.60m
Boom Sections	5
Boom Raising Angle	Min. 0° ~ Max. 76°
Slewing Angle (Continuous)	360°

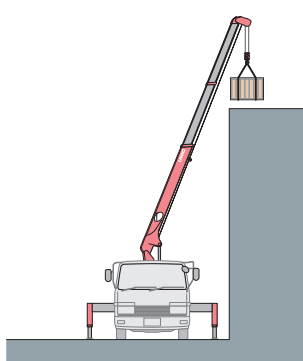
Crane Mounting Dimensions

(Unit: mm)

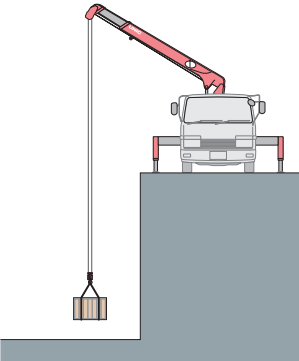


Operational advantages...

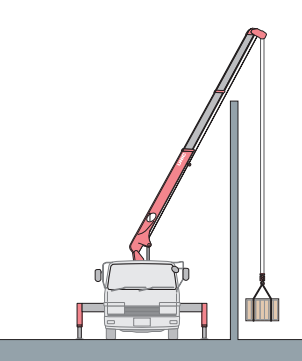
High or low tight, UNIC straight-boom wire-rope cranes match the task. They're great high-lift performers, Lifting loads over walls is also no problem with their unrestricted raising and lowering. In deep-hole jobs they're strong, and accurate. Many extra safety features, too.



Buildings, walls, whatever, with UNIC wire-rope cranes you get precise high-lift placement and safe, sure operation. Their dependability is all in their strength and design, original UNIC features.



Higher performance, too, at lower depths. UNIC wire-rope cranes handle heavy loads in deep-hole jobs with accuracy and stability. A wide range of models assures versatile matching to job requirements.



Tight places are the right places for UNIC wire-rope cranes. In any operating situation their strong steel cables mean extra dependability and safety. High, low, or tight, UNIC wire-rope cranes are always right.



NOTE



HOOK
+
SLINGS
+
LOAD
=
RATED LOAD

1. Rated loads shown in the chart are based on the crane strength with the outriggers fully extended on a firm level ground and on the actual working radius including the deflection of boom.
2. The weights of hook (100 kg.), slings, and any accessories attached to the boom or loadline must be deducted from the above capacities in the chart.
3. Capacities shown must reduce in accordance with vehicle weight and loaded condition of truck, crane mounting position, and operating speed.
4. The figures in relation to the speed are on the basis of no-load running at rated oil flow conditions.
5. In accordance with our policy of constant product improvement, all specifications are subject to change without notice or obligations.

UNIC

Truck-Mounted UNIC Crane

URV1505W-CNCT

For Heavy-Duty truck

Maximum Lifting Capacity

15100 kg



FURUKAWA UNIC CORPORATION

<https://uniccrane-global.com>

Authorized UNIC distributor

FURUKAWA UNIC CORPORATION

URV1505W-CNCT

Heavy duty and Top safety,
Reliable on the job

URV1505W

Maximum Lifting Capacity	15100kg
Maximum Hook Height	19.7m
Maximum Working Radius	18.11m



Wide Horizontal Extension

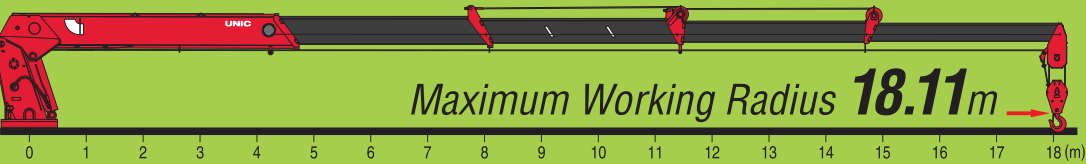
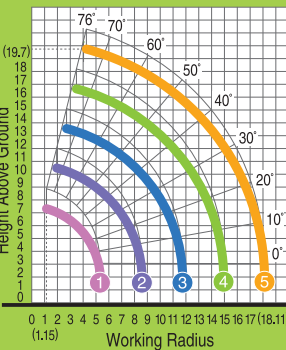
Main Outrigger Max. (Hydraulic Extended)	8.25m
Rear Outrigger Max. (Hydraulic Extended)	3.2m

NOTE: Top Seat-Control Version

URV1505W

5 Section Boom

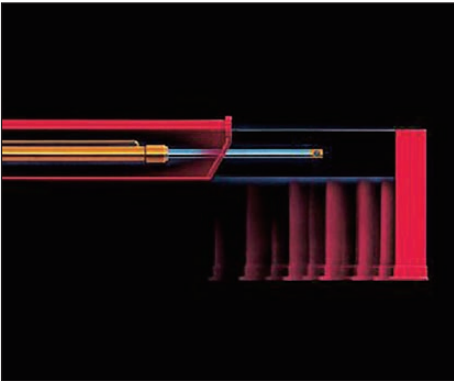
Working Range (m)



Rated Loads (kg)

Working Radius (m)	2.0	3.0	3.5	4.0	4.5	5.0	6.0	7.0	8.0	9.0	10.0	11.0	12.0	13.0	14.0	15.0	16.0	17.0	18.0
1	15100	11600	9600	8500	7600	7000	6800 (5.31m)												
2	10400	9100	8100	7100	6500	5600	4800	4200	4000 (8.57m)										
3			8500	7400	6600	6000	5000	4350	3900	3550	3250	2900	2700 (11.75m)						
4					6500	5600	4700	4100	3700	3300	2900	2600	2350	2100	1950	1850 (14.93m)			
5						4600	4000	3400	3000	2800	2600	2400	2200	2050	1900	1750	1600	1350	1000 (18.11m)

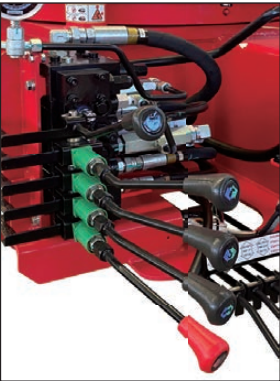
Standard Equipment



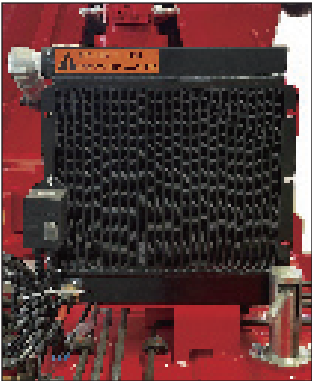
Hydraulic Horizontal Outrigger



Rear Outrigger



Base-Control



Oil Cooler

Safety Devices



Alarm for Overwinding / Automatic Stop for Overwinding



Automatic Hook Stow System



Manual lock System for Slewing



Derrick Cylinder Pressure Alert System

Option



Top Seat-Control



Safe Load Indicator

